

JW ANDERSON COLOURBLOCK PATCHWORK CARDIGAN / KNIT PATTERN

INFORMATION

This striking patchwork cardigan will introduce a relative newcomer to various hand knitting stitches; from simple Garter Stitch, through lovely textured Moss stitches to a Colour Stranded technique featuring a Hounds Tooth pattern.

It's knitted in manageable pieces, which are then sewn together, which makes it a great project for a knit in the park.

Skill: Beginner/Intermediate

One size

Flat body width: 84cm

Total Length: 60cm

Sleeve Length: 48cm

Tension

18sts measures 14cm using 8.00mm needles and Super Chunky yarn.

Materials

Super Chunky weight yarn
(quantities based on 90m length per 100g)

4 x 100g balls Red

4 x 100g balls Black

3 x 100g balls Burnt Orange

3 x 100g balls Yellow

3 x 100g balls Green

1 x 100g ball Blue

Aran weight yarn

3 x 100g balls Red

6 x 2cm Black Buttons

A pair of 8.00mm knitting needles for the Patchwork

A pair of 5.50mm knitting needles for the Button and Buttonhole Bands

A pair of 4.00mm knitting needles for the Ribs

A set of chunky knitter's pins and a knitter's needle for sewing seams

ABBREVIATIONS

K – knit

P – purl

St(s) – stitch(es)

RS – Right side

WS – Wrong side

Rep – Repeat

Rem - Remaining

Stst – Stocking Stitch. K 1 row, p 1 row.

Yfwd – Bring yarn between needles to front of work.

K2tog – Decrease 1 stitch: Knit 2 stitches together. Insert needle into 2sts instead of one and k.

K1B – Knit 1 below: Insert needle through centre of purl st below next st and k in usual way.

Sl1 – Insert needle into next st as if to purl, slip across to RH needle without knitting.



OVERVIEW

All stitch patterns are worked over 18sts. At the beginning of a panel cast on 18sts. When the square measures 14cm in length, follow the charts for the next stitch pattern to form panel. There is some simple shoulder and neck shaping at the top of the panels for the Back and Fronts. The panels are then sewn together to create the garment pieces.

NB. Leave 8cm tails throughout when you cast on and change colour. Do not darn but follow instructions in the To Make Up section to form small tassels.

STITCH SQUARES

Each colour is a different stitch as follows:

Black: Moss Stitch

Row 1: *K1, p1, rep from * to end.

Row 2: *P1, k1, rep from * to end.

Rep 2 rows for 14cm, then change to next colour/stitch.

Yellow: Double Moss Stitch

Rows 1 & 2: *K1, p1, rep from * to end.

Row 3 & 4: *P1, k1, rep from * to end.

Rep 4 rows for 14cm, then change to next stitch or follow instructions for front and back neck shaping.

Burnt Orange: Garter Stitch

Knit every row for 14cm, then change to next stitch or follow instructions for front and back neck and shoulder shaping.

Green: Reverse Bee Stitch

Row 1 (RS): Knit.

Row 2: *K1, K1B, rep from * to last 2sts, k2.

Row 3: Knit.

Row 4: K2, *K1B, k1, rep from * to end.

Rep 4 rows for 14cm, then change to next stitch or follow instructions for front and back shoulder shaping.

Red: Jersey Slip Stitch

Row 1: Knit.

Row 2: Purl.

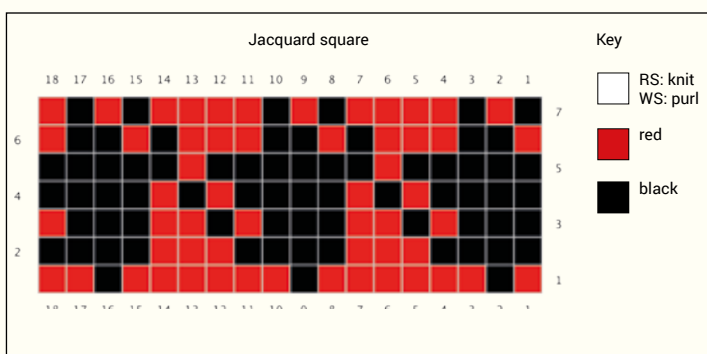
Row 3: *K1, Sl1, rep from * to last 2sts, k2.

Row 4: Purl.

Rep rows 3 & 4 until section measures 14cm, then change to next stitch, or follow instructions for front and back shoulder shaping.

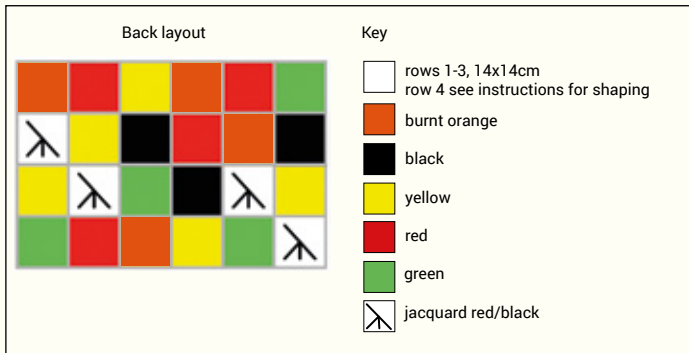
Red/Black: Jacquard

Rep rows 1-7 from chart for 14cm. Work in stst using Stranded Colour Method.



BACK

Using Back Layout chart as a stitch guide complete the Centre 4 panels as follows:



Complete 3 x 14cm stitch sections of one of the Centre panels, then work the 4th stitch section to measure 12cm.

Cast off.

Rep for 3 rem centre panels.

Left side panel

Complete 3 x 14cm stitch sections for Left Back panel.

Shape left back shoulder

Using Burnt Orange, work 10cm in Garter stitch, ending with a RS row.

Next row (WS): Cast off 9sts, K to end.

Next row: Knit.

Cast off rem 9sts.

Right side panel

Complete 3 x 14cm stitch sections for Right Back panel.

Shape right back shoulder

Using Green, work 10cm in patt, ending with RS facing for next row.

Next row (RS): Cast off 9sts, work in patt to end.

Next row: work in patt.

Cast off rem 9sts.

LEFT FRONT

Using Left Front Layout chart as a stitch guide complete the Centre panel as follows:

Complete 3 x 14cm stitch sections, then work the 4th stitch section to measure 12cm.

Cast off.

Side panel

Complete 3 x 14cm stitch sections.

Shape left front shoulder

Using Green, work 10cm in patt, ending with RS facing for next row.

Next row (RS): Cast off 9sts, knit to end.

Next row: work in patt.

Cast off rem 9sts.

Centre front panel

Complete 3 x 14cm stitch sections.

Shape left front neck

Using Burnt Orange, work 5cm in Garter stitch, ending with a RS row.

Next row (WS): Cast off 2sts, k to end.

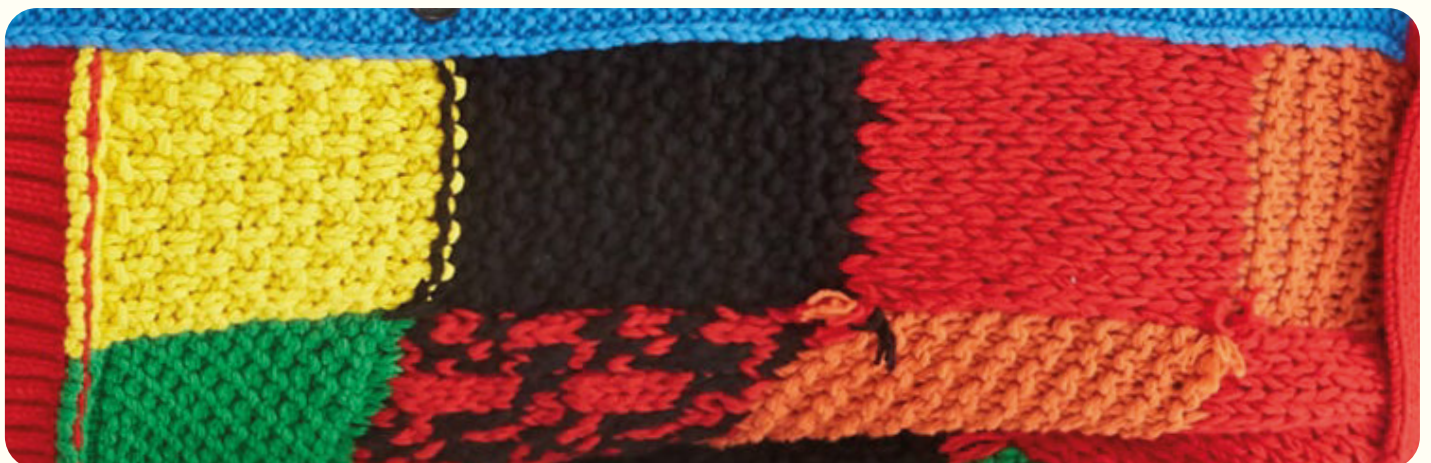
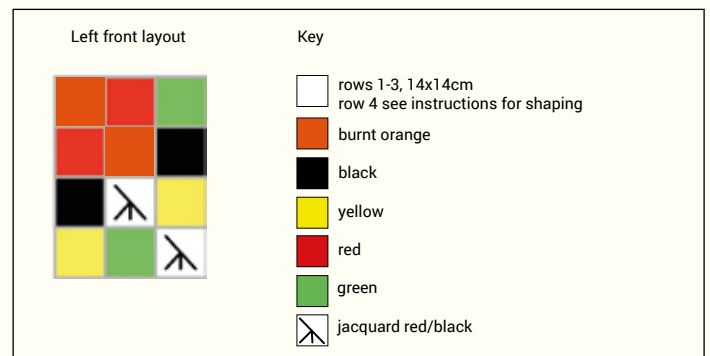
Next row: K to last 2sts, k2tog.

Next row: K2tog, k to end.

Rep last 2 rows until 9sts rem.

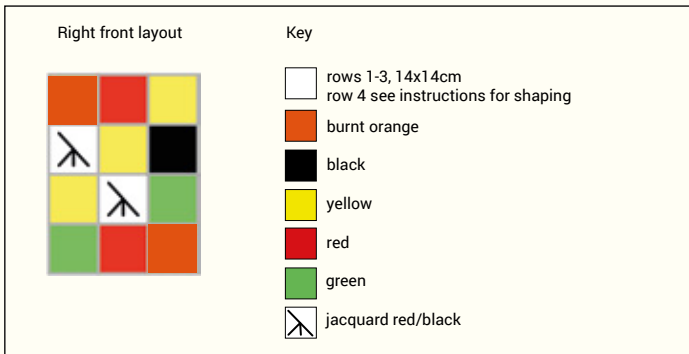
Work straight until stitch section measures 12cm.

Cast off.



RIGHT FRONT

Using Right Front Layout chart as a stitch guide complete the Centre panel as for Left Front.



Side panel

Complete 3 x 14cm stitch sections.

Shape right front shoulder

Using Burnt Orange, work 10cm in patt, ending with RS facing for next row.

Next row (WS): Cast off 9sts, knit to end.

Next row: Knit.

Cast off rem 9sts.

Centre front panel

Complete 3 x 14cm stitch sections.

Shape right front neck

Using Yellow, work 5cm in patt, ending with RS facing for next row.

Next row (RS): Cast off 2sts, k to end.

Next row: Patt to last 2sts, k2tog.

Next row: K2tog, patt to end.

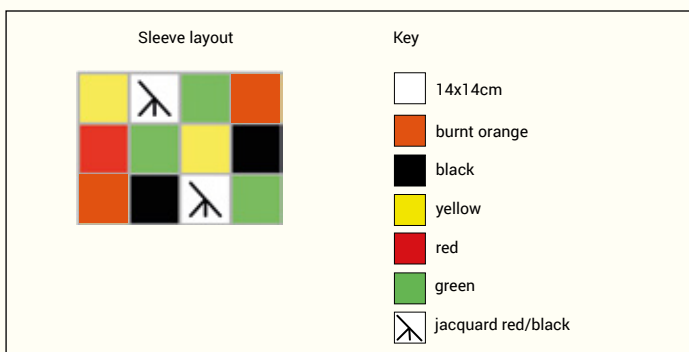
Rep last 2 rows until 9sts rem.

Work straight until stitch section measures 12cm.

Cast off.

SLEEVES

Using chart as a guide, work 4 panels, with 3 stitch squares in each.



COLLAR

Using 4.00mm needles and Red Aran, cast on 119sts.

Work 18cm in k1, p1 rib.

Cast off loosely in knit.

Cut yarn, leaving a long end for sewing onto neck.

BACK RIB

Using 4.00mm needles and Red Aran, cast on 182sts.

Work 7cm in k2, p2 rib.

Cast off loosely in knit.

Cut yarn, leaving a long end for sewing onto Back.

FRONT RIB (MAKE 2)

Using 4.00mm needles and Red Aran, cast on 94sts.

Work 7cm in k2, p2 rib.

Cast off loosely in knit.

Cut yarn, leaving a long end for sewing onto Front.

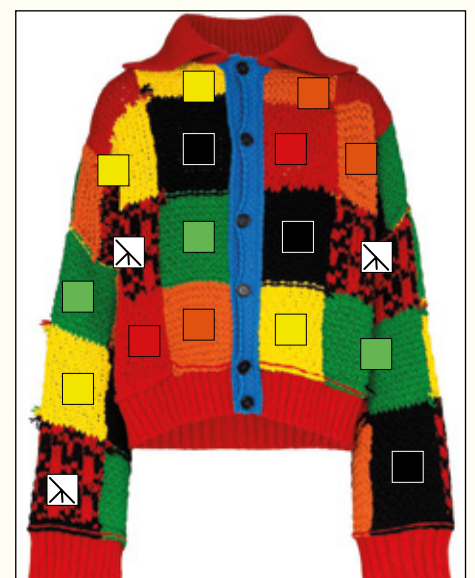
CUFFS (MAKE 2)

Using 4.00mm needles and Red Aran, cast on 110sts.

Work 7cm in k2, p2 rib.

Cast off loosely in knit.

Cut yarn, leaving a long end for sewing onto Sleeve.



BUTTONHOLE BAND

Using 5.50mm needles and Blue, cast on 6sts.

Row 1 and every RS row: K5, p1.

Row 2: (K1, k1B) twice, k2.

Row 4 Make Buttonhole: K2, k2tog, yfwd, k1B, k1.

Row 6: (K1, k1B) twice, k2: NB. For 2nd K1B, needle is inserted into buttonhole space.

Row 8: K2, (k1B, k1) twice.

Row 10: (K1, k1B) twice, k2.

****Rep rows 7-10 until 9cm have been worked from last buttonhole, ending with row 7, then work rows 4-7 once more for Buttonhole. ****

Rep from ****** to ****** until 6 buttonholes have been completed. The Buttonhole band should measure 55cm.

Cast off.

BUTTON BAND

Using 5.50mm needles and Blue, cast on 6sts.

Row 1 and every RS row: P1, k5.

Row 2: (K1, k1B) twice, k2.

Row 4: K2, (k1B, k1) twice.

Rep rows 1-4 until work measures 55cm.

Cast off.





TO MAKE UP

Join the panels

Use the Red Aran yarn to sew.
Lay the panels in order.
Pull all tail ends to RS of work. Do not darn.
With RS together and matching the stitch sections, pin together 2 panels.
Sew using a narrow backstitch seam.
Join the rest of the panels in the same way.

Join ribs

With WS together, pin Back Rib to bottom edge, matching centres. Join with a backstitch seam.
NB. The seam will be on the outside.
Rep for both Front pieces and Cuffs.

Attach front bands

Pin bands starting at bottom of Front rib to start of neck shaping.
NB. The Buttonhole band is sewn to the Left Front.
Sew on Front Bands.
Sew buttons to Button band.

Join shoulder seams

With RS together, pin and join shoulder seams.
Attach Collar
Fold collar in half to mark centre and pin to CB neck. Pin collar around neck, starting and finishing at centre of front bands. Sew in place.

Join side seams

Place markers 28cm from shoulder. With WS together, pin side seams up to armhole markers, matching stitch sections and ribs. Sew with a narrow backstitch.
NB. The seam will be on the outside.

Insert sleeves

With WS together, pin sleeves into armhole and sew as for side seams.

Make tassels

On the RS of cardigan, tie all the tail ends together at points where stitches change.
Trim to 3cm.

Pattern compiled by Ruth Herring.
IG @confessions_of_a_yarnaholic